

Ordering information

When placing an order, please state the following minimum data in the order, as in the example.

The product code of the motor is composed in accordance with the following example.

Motor type	M3AA 112 MB
Pole number	4
Mounting arrangement (IM-code)	IM B3 (IM 1001)
Rated output	4 kW
Product code	3GAA 112312-ADE
Variant codes if needed	

Motor size

A	B	C	D, E, F	
M3AA	112 MB	3GAA 112 312	- ADE, 122, 043, etc.	
		1 2 3 4 5 6 7 8 9 10 11 12 13 14...		

A Motor type
B Motor size
C Product code
D Code for mounting arrangement
E Voltage and frequency code
F Generation code followed by variant codes

Explanation of the product code

Positions 1 to 4

3GAA =

Totally enclosed motor with aluminum stator frame

Position 4

Type of rotor

A = Squirrel cage rotor

Positions 5 and 6

IEC size

06 = 63	16 = 160
07 = 71	18 = 180
08 = 80	20 = 200
09 = 90	22 = 225
10 = 100	25 = 250
11 = 112	28 = 280
13 = 132	

Position 7

Pole pairs

1 = 2 poles
2 = 4 poles
3 = 6 poles
4 = 8 poles
5 = 10 poles
6 = 12 poles
7 = > 12 poles
8 = Two-speed motors
9 = Multi-speed motors

Positions 8 to 10

Running number

Position 11

- (dash)

Position 12

Mounting arrangement

A = Foot-mounted motor
B = Flange-mounted motor. Large flange with clearance holes.
C = Flange-mounted motor. Small flange with tapped holes.
F = Foot- and flange-mounted motor. Special flange.
H = Foot- and flange-mounted motor. Large flange with clearance holes.
J = Foot- and flange-mounted motor. Small flange with tapped holes.
N = Flange-mounted (CI ring flange FF)
P = Foot-and flange-mounted motor (CI ring flange FF)
V = Flange-mounted motor. Special flange.

Position 13

Voltage and frequency: See tables below

Position 14

Version A,B,C... =

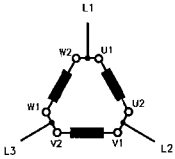
Generation code followed by variant codes

Code letters for supplementing the product code - single speed motors

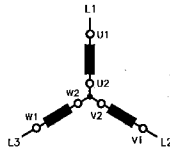
Motor size	Code letter for voltage and frequency								X	
	Direct start or, with Δ-connection, also Y/Δ-start									
	S		D		H	E	F	T		U
50 Hz	60 Hz	50 Hz	60 Hz	50 Hz	50 Hz	50 Hz	50 Hz	50 Hz	50 Hz	
63-132	220-240 VΔ 380-420 VY	250-280 VΔ 440-480 VY	380-420 VΔ 660-690 VY	440-480 VΔ -	415VΔ ¹⁾	500 VΔ ¹⁾	500 VY	660 VΔ ¹⁾	690 VΔ ¹⁾	Other rated voltage, connection or frequency, 690 V maximum
160-180	220-240 VΔ 380-420 VY	- 440-480 VY	380-420 VΔ 660-690 VY	440-480 VΔ -	415 VΔ	500 VΔ	660 VΔ	690 VΔ		
200-280	220, 230 VΔ 380,400,415 VY	- 440 VY	380,400,415VΔ 660, 690 VY	440 VΔ -	415 VΔ	500 VΔ	500 VY	660 VΔ	690 VΔ	

¹⁾ On request.

Anslutning av trefasiga enhastighetsmotorer



Δ -koppling



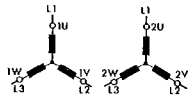
Y koppling

Anslutning av tvåhastighetsmotorer

Tvåhastighetsmotorer ansluts normalt enligt nedan; rotationsriktning enligt definition på sid 35. Motorer med normal utförande har sex uttag och en jordplint i anslutningslådan. Motorer med två separata lindningar är normalt D-D kopplade. De kan även vara Y/Y-, Y/D- eller D/Y-kopplade. Motorer med en lindning och med Dahlanderkoppling är anslutna D/YY om de är avsedda att driva laster med konstant moment. För fläktar tillämpas Y/YY-koppling. Ett kopplingsschema medföljer varje motor.

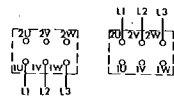
När en motor startas Y/D -kopplad måste man alltid se kopplingsschemat som levererats av startapparatillverkaren.

1. Två separata lindningar Y/Y



Lågt varvtal

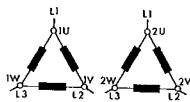
Högt varvtal



Lågt varvtal

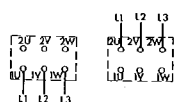
Högt varvtal

2. Två separata lindningar Δ/Δ



Lågt varvtal

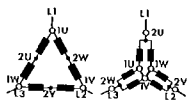
Högt varvtal



Lågt varvtal

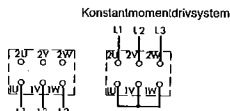
Högt varvtal

3. Dahlander-koppling Δ/YY



Lågt varvtal

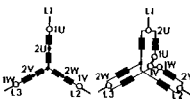
Högt varvtal



Lågt varvtal

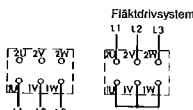
Högt varvtal

4. Dahlander-koppling Y/YY



Lågt varvtal

Högt varvtal



Lågt varvtal

Högt varvtal