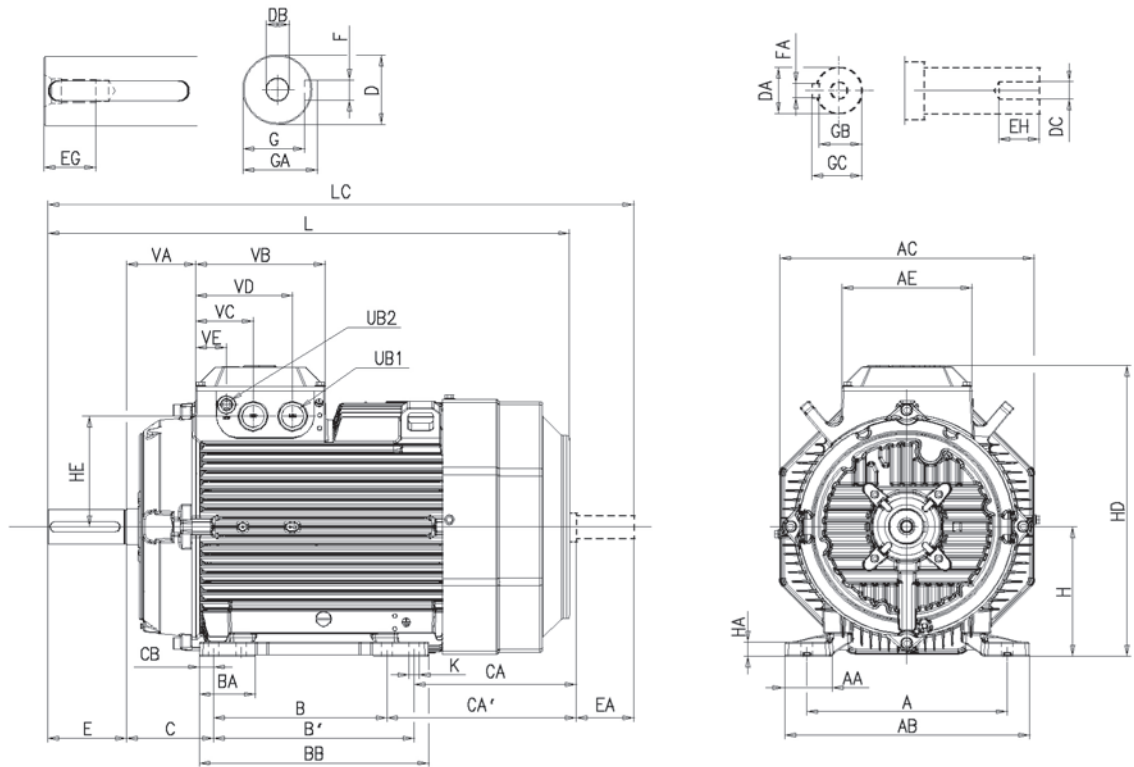


Industrial performance aluminum motors M3AA 160 - 180

Dimension drawings

Foot-mounted motor; IM B3 (IM 1001), IM 1002



IM B3 (IM 1001), IM 1002

Motor size	A	AA	AB	AC	AE	B	B'	BA	BB	C	CA	CA'	CB	D	DA	DB	DC	E	EA	EG	EH	F
160 ²⁾	254	54	310	323	180	210	254	84	294	108	164	125.5	20	42	32	M16	M12	110	80	36	28	12
160 ³⁾	254	54	310	323	180	210	254	84	294	108	262	223.5	20	42	32	M16	M12	110	80	36	28	12
180	279	68	341	354	180	241	279	78	319	121	263	225	30	48	32	M16	M12	110	80	36	28	14

Motor size	FA	G	GA	GB	GC	H	HA	HC	HD	HE	K	L	LC	UB1 ¹⁾	UB2 ¹⁾	VA	VB	VC	VD	VE
160 ²⁾	10	37	45	27	35	160	20	342	370	139	15	584	671.5	2*M40	M16	88.5	180	80	135.5	43
160 ³⁾	10	37	45	27	35	160	20	342	370	139	15	681	768.5	2*M40	M16	88.5	180	80	135.5	43
180	10	42.5	51.5	27	35	180	20	369	405	154	15	726	815	2*M40	M16	88.5	180	80	135.5	43

Tolerances:

A, B ISO js14
 C, CA ± 0.8
 D, DA ISO k6
 F, FA ISO h9
 H +0 -0.5

¹⁾ Knockout openings.

²⁾ MLA-2, MLB-2 and MLC-2 poles; MLA-4 poles; MLA-6 poles; MLA-8 and MLB-8 poles.

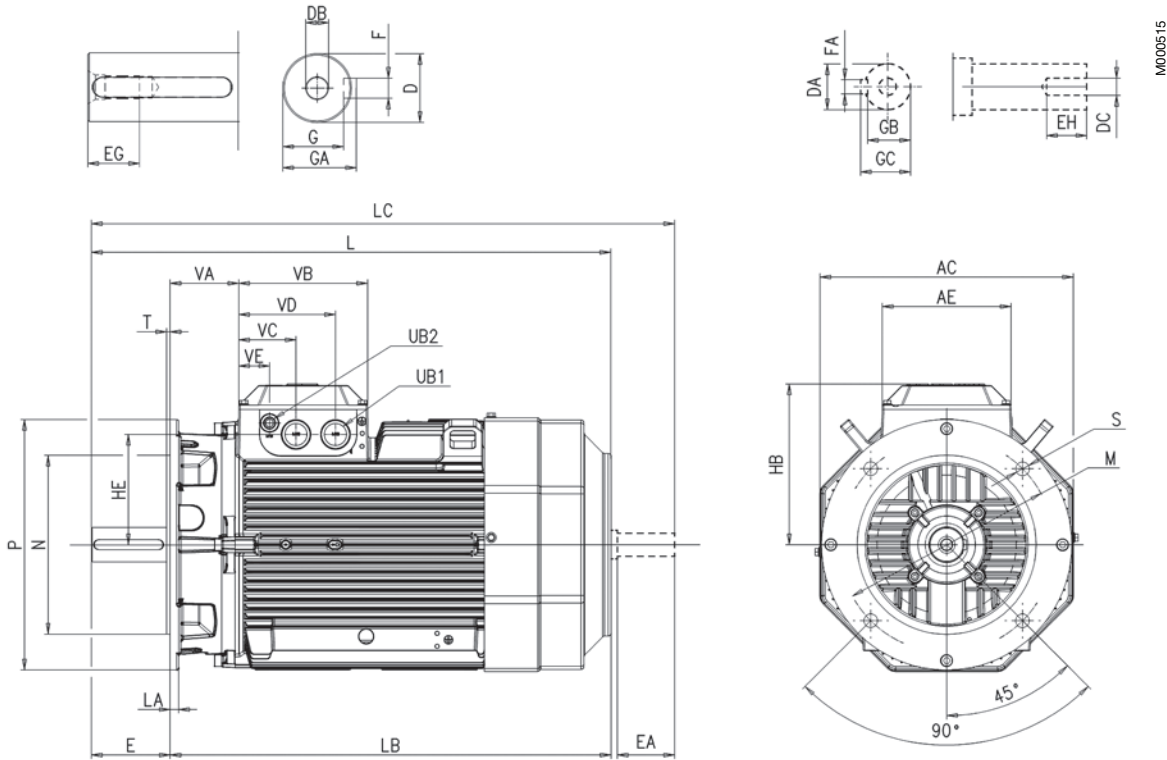
³⁾ Remaining variants, i.e. MLD-2 and MLE-2 poles; MLB-4, MLC-4 and MLD-4 poles; MLC-8 poles.

Above table gives the main dimensions in mm.
 For detailed drawings please see our web-pages
 'www.abb.com/motors&generators'
 or contact ABB.

Industrial performance aluminum motors M3AA 160 - 180

Dimension drawings

Flange-mounted motor; IM B5 (IM 3001), IM 3002



M000515

IM B5 (IM 3001), IM 3002

Motor size	AC	AE	D	DA	DB	DC	E ⁴⁾	EA	EG	EH	F	FA	G	GA	GB	GC	HB	HE
160 ³⁾	323	180	42	32	M16	M12	110	80	36	28	12	10	37	45	27	35	210	139
160 ⁴⁾	323	180	42	32	M16	M12	110	80	36	28	12	10	37	45	27	35	210	139
180	354	180	48	32	M16	M12	110	80	36	28	14	10	42.5	51.5	27	35	225	154

Motor size	L	LA	LB	LC	M	N	P	S	T	UB1 ¹⁾	UB2 ¹⁾	VA	VB	VC	VD	VE
160 ³⁾	584	20	474	671.5	300	250	350	19	5	2*M40	M16	88.5	180	43	80	135.5
160 ⁴⁾	681	20	571	768.5	300	250	350	19	5	2*M40	M16	88.5	180	43	80	135.5
180	726	20	616	815	300	250	350	19	5	2*M40	M16	88.5	180	43	80	135.5

Tolerances:

D, DA ISO k6
F, FA ISO h9
N ISO j6

¹⁾ Knockout openings.

²⁾ MLA-2, MLB-2 and MLC-2 poles; MLA-4 poles; MLA-6 poles; MLA-8 and MLB-8 poles.

³⁾ Remaining variants, i.e. MLD-2 and MLE-2 poles; MLB-4, MLC-4 and MLD-4 poles; MLC-8 poles.

⁴⁾ Shoulder of shaft extension and contact surface of flange are in same plane.

Above table gives the main dimensions in mm.
For detailed drawings please see our web-pages
www.abb.com/motors&generators
or contact ABB.