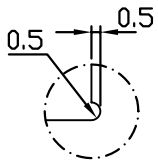
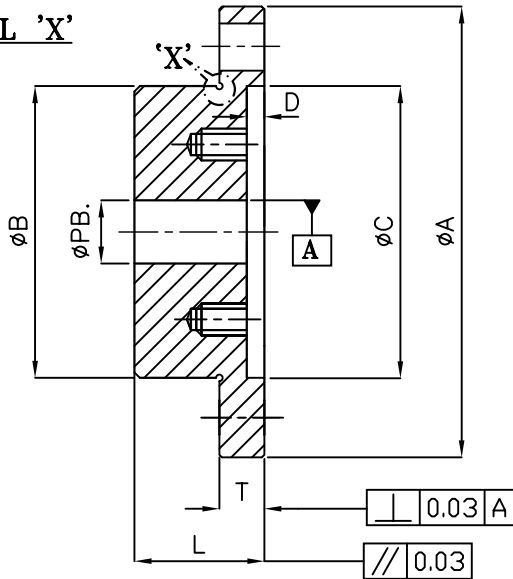


DO NOT SCALE

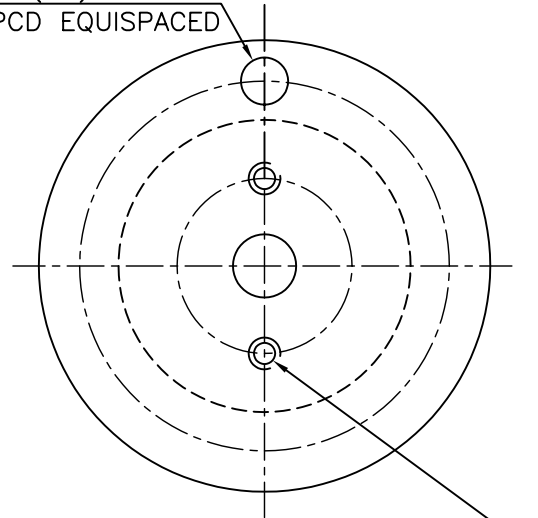
ALL DIMENSIONS ARE IN mm.



DETAIL 'X'



N NOS- ϕH (H8) HOLES
ON 'P1' PCD EQUISPACED



2 NOS-M TAPPED HOLES 'E' DEEP
ON 'P2' PCD AT 180° APART

| COUP. SIZE | ϕA | ϕB | H8 ϕPB | ϕC Δ | D | T | L | 'N' NOS | ' ϕH ' (H8) HOLES | ± 0.05 'P1' PCD | 'M' TAPP. | 'E' DEEP | ± 0.5 'P2' PCD |
|-------------|------------------|----------|------------------------|-------------------|-----|------|------|---------|----------------------------|---------------------|-----------|----------|--------------------|
| 10 Δ | 115.83 115.87 | 84 | +0.027 +0.000 16 | 80.77 80.80 | 2 | 14 | 42 | 6 | +0.018 +0.000 6.350 | 95.25 | M5 | 6.25 | 72 |
| 15 Δ | 152.36 152.40 | 107 | +0.033 +0.000 24 | 99.57 99.60 | 2 | 19 | 49 | 8 | +0.022 +0.000 9.525 | 122.25 | M5 | 6.25 | 90 |
| 20 Δ | 177.76 177.80 | 130 | +0.033 +0.000 28 | 121.92 121.96 | 2 | 19 | 61 | 6 | +0.027 +0.000 12.7 | 149.25 | M6 | 7.50 | 106 |
| 25 Δ | 212.69 212.73 | 157 | +0.039 +0.000 35 | 148.84 148.88 | 2.5 | 22 | 76.5 | 6 | +0.027 +0.000 15.875 | 181 | M6 | 7.50 | 130 |
| 30 Δ | 239.69 239.73 | 182 | +0.039 +0.000 42 | 173.23 173.27 | 2.5 | 22 | 90.5 | 8 | +0.027 +0.000 15.875 | 206.40 | M8 | 10 | 152 |
| 35 Δ | 279.36 279.40 | 212 | +0.039 +0.000 50 | 199.64 199.69 | 3 | 28.5 | 105 | 8 | +0.033 +0.000 19.050 | 241.30 | M8 | 10 | 175 |
| 40 Δ | 317.54 317.58 | 250 | +0.039 +0.000 50 | 234.95 235.00 | 4 | 28.5 | 120 | 8 | +0.033 +0.000 19.050 | 279.40 | M8 | 10 | 210 |

NOTES-

- 1) BREAK ALL SHARP CORNERS WITH 1x45° CH.
- 2) ALL CO-AXIAL DIAMETERS SHOULD BE CONCENTRIC WITHIN 0.03 mm.

| | | | | | | | | | | | | | |
|--|-----|-----|-----|-----|-----|------|------|------|------|----------------------|---------------------------------|------------|--------------------|
| UNSPECIFIED TOLERANCE \pm FOR DIMENSIONS | | | | | | | | | | DMRN 4501 | CPLG SIZE 15 DIM $\phi 99.6$ | 22/4/05 | |
| OVER | 0.5 | 3 | 6 | 30 | 120 | 315 | 1000 | 2000 | 4000 | 2 IRR | WAS 99.06 | | |
| UPTO | 3 | 6 | 30 | 120 | 315 | 1000 | 2000 | 4000 | 8000 | 1 IRR | DIM ϕA LOWER SIDE CHANGED | 4/10/04 | |
| TOL. | 0.1 | 0.1 | 0.2 | 0.3 | 0.5 | 0.8 | 1.2 | 2 | 3 | REV SIGN | ALTERATION | DATE | |
| TITLE RGS COUPLING RIGID HUB 1 | | | | | | | | | | MATERIAL EN-9 BS 970 | | SCALE: NTS | |
| PARTY | | | | | | | | | | TRACED | | REF.NO | |
| RATHI TRANSPower PVT LTD PUNE 411006 | | | | | | | | | | DRAWN A.V.P. | | 13/3/04 | DRG.NO. R/G-1386/2 |
| | | | | | | | | | | CHECKED IRR | | 26.3.04 | |
| | | | | | | | | | | APPROVED IRR | | 26.3.04 | |