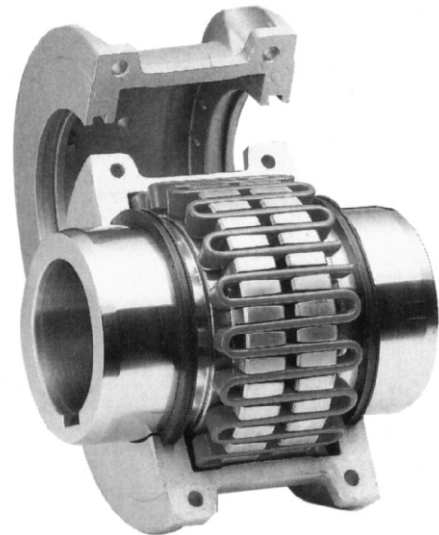
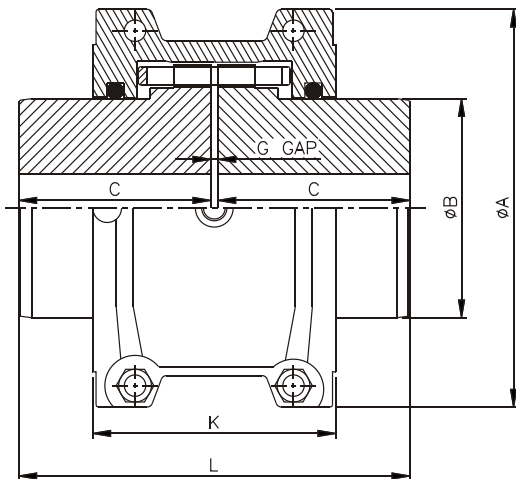


### Features :-

- Vertical split cover: Ideal for higher running speeds and general purpose. Horizontal split also available for specific applications.
- Lubrication fittings: One or more lube holes in each half cover makes for easier lubrication. Fill through one and remove other plug for venting.
- Seals: Durable synthetic material prevents loss of lubricant and entrance of water, dust or other foreign materials.
- Hubs: Made of steel for maximum strength.
- Taper Grid: Made of high strength steel, quenched and tempered to spring hardness.

### Applications :-

- Cement mills: Crushers and grinding machines.
- Steel mills: Coilers, cold mills, hot mills etc.
- Paper mills: Calendar, couch roll, suction roll, dryer drives etc.
- Sugar mills: Cane carrier and leveler, cane knife and crusher.
- General: Agitators, Blowers, conveyors, cranes etc.



### TECHNICAL DATA

Coupling Size	Max. Speed (rpm)	Basic Torque (kg.cm)	Bore Dia (mm)		Dimensions (mm)					Gap (mm)	Weight In (kg)	Lube weight (Kg)
			Max.	Min.	ØA	ØB	C	K	L			
1020	4500	486	28	12.7	101.6	39.7	47.5	66.5	98.0	3	1.9	0.03
1030	4500	1383	35	12.7	110.0	49.2	47.5	68.3	98.0	3	2.6	0.03
1040	4500	2304	43	12.7	117.5	57.1	50.8	70.0	104.6	3	3.4	0.05
1050	4500	4033	50	12.7	138.0	66.7	60.3	79.5	123.6	3	5.4	0.05
1060	4350	6337	56	19.1	150.5	76.2	63.5	92.0	130.0	3	7.3	0.09
1070	4125	9217	67	19.1	161.9	87.3	76.2	95.0	155.4	3	10	0.11
1080	3600	19010	80	27.0	194.0	104.8	88.9	116.0	180.8	3	18	0.17
1090	3600	34564	95	27.0	213.0	123.8	98.4	122.0	199.8	3	25	0.25
1100	2400	58183	110	41.3	250.0	142.0	120.6	155.5	245.7	4.5	42	0.43
1110	2250	86411	120	41.3	270.0	160.3	127.0	161.5	258.5	4.5	54	0.51
1120	2025	126736	140	60.3	308.0	179.4	149.2	191.5	304.4	6	81	0.73
1130	1800	184343	170	66.7	346.0	217.5	161.9	195.0	329.8	6	121	0.91
1140	1650	264993	200	66.7	384.0	254.0	182.8	201.0	371.6	6	178	1.13
1150	1500	368686	215	108.0	453.1	269.2	182.9	271.3	371.8	6	234	1.95
1160	1350	518465	240	120.7	501.4	304.8	198.1	278.9	402.2	6	317	2.81
1170	1225	691286	280	133.4	566.4	355.6	215.9	304.3	437.8	6	448	3.49
1180	1100	958584	300	152.4	629.9	393.7	238.8	321.1	483.6	6	619	3.76
1190	1050	1267358	335	152.4	675.6	436.9	259.1	325.1	524.2	6	776	4.40
1200	900	1728216	360	177.8	756.9	497.8	279.4	355.6	564.8	6	1058	5.62
1210	820	2539000	390	178.0	844.5	533.4	304.8	431.8	622.3	12.7	1424	10.5
1220	730	3426200	420	203.0	920.7	571.5	325.1	490.2	662.9	12.7	1785	16.1

### Selection Procedure:

1. Select appropriate service factor F.
2. Calculate coupling Torque T (Knm)

$$T = \frac{9.55 \times kW \times F}{N}$$

Where kW = Drive rated power (kW)  
N = Speed (rev./min)

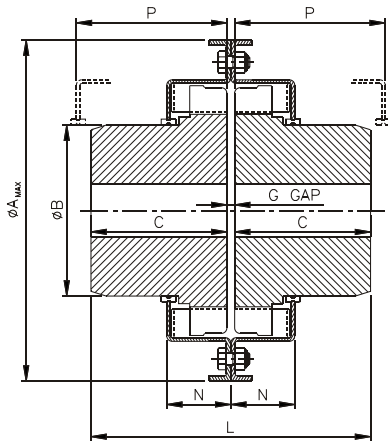
3. Select coupling with the same or higher Torque.
4. Check hub bore capacity.
5. Check allowable speed.

### Lubrication:

For quality lubrication to get good performance and long life, Rathi Special Grease (RSG) is highly recommended.

### Misalignment Capacity:

Coupling Size	Recommended Installation		Operating		Normal Gap (mm)
	Parallel	Angular	Parallel	Angular	
1020	0.15	0.06	0.3	0.24	3
1030	0.15	0.037	0.3	0.29	3
1040	0.15	0.08	0.3	0.32	3
1050	0.20	0.10	0.4	0.39	3
1060	0.20	0.11	0.4	0.45	3
1070	0.20	0.12	0.4	0.50	3
1080	0.20	0.15	0.4	0.61	3
1090	0.20	0.17	0.4	0.70	3
1100	0.25	0.20	0.5	0.82	4.5
1110	0.25	0.22	0.5	0.90	4.5
1120	0.28	0.25	0.56	1.01	6
1130	0.28	0.30	0.56	1.19	6
1140	0.28	0.33	0.56	1.34	6
1150	0.30	0.39	0.6	1.56	6
1160	0.30	0.44	0.6	1.77	6
1170	0.30	0.50	0.6	2.00	6
1180	0.38	0.56	0.76	2.26	6
1190	0.38	0.61	0.76	2.44	6
1200	0.38	0.68	0.76	2.72	6



### TECHNICAL DATA

Coupling Size	Max. Speed (rpm)	Basic Torque (kg.cm)	Bore Dia (mm)		Dimensions (mm)						Gap (mm)	Weight In (kg)	Lube weight (Kg)
			Max.	Min.	ØA <sub>max</sub>	Ø B	C	L	N	P			
1020	6000	487	30	12.7	116	40	47	97	25	47	3	2.0	0.03
1030	6000	1363	36	12.7	125	49	47	97	25	47	3	2.6	0.03
1040	6000	2239	44	12.7	133	57	50	103	26	50	3	3.4	0.05
1050	6000	3991	51	12.7	153	66	60	123	31	60	3	5.4	0.05
1060	6000	6327	57	19.1	166	76	63	129	33	63	3	7.3	0.09
1070	5500	9150	68	19.1	177	87	76	155	34	66	3	10.4	0.11
1080	4750	18982	82	27.0	206	105	89	181	44	88	3	17.7	0.17
1090	4000	34070	95	27.0	236	124	98	199	48	95	3	25.4	0.25
1100	3250	57919	108	41.3	271	142	120	244	60	120	4	42.2	0.43
1110	3000	85661	117	41.3	291	160	127	258	63	124	4	54.4	0.51
1120	2700	126545	136	60.3	325	179	149	304	75	142	6	81.6	0.73
1130	2400	183977	165	66.7	383	217	162	330	76	146	6	122.5	0.91
1140	2200	264772	184	66.7	421	254	184	374	79	155	6	180.1	1.13
1150	2000	368928	203	108.0	481	269	182	370	107	203	6	230.0	1.95
1160	1750	518465	240	120.7	535	305	198	402	114	218	6	321.1	2.81
1170	1600	691286	280	133.4	585	356	216	438	119	236	6	448.2	3.49
1180	1400	958584	300	152.4	632	394	239	484	130	259	6	591.0	3.76
1190	1300	1267358	335	152.4	687	437	259	524	135	279	6	761.0	4.40
1200	1100	1728216	360	177.8	739	498	279	564	145	299	6	1021.0	5.62

- All dimensions are in mm unless otherwise specified.
- In view of our constant endeavour to improve quality of our products, we reserve the right to alter or change specifications without prior notice.
- This document is the intellectual property of Rathi Transpower Pvt. Ltd. and subject to copyright.



### Rathi Transpower Pvt Ltd

Rathi Chambers, 7, Deccan College Road,  
Pune 411 006.  
Phone : 91-20-30517200  
Fax : 91-20-30517212  
E-mail : info@rathigroup.com  
Website : www.rathicouplings.com