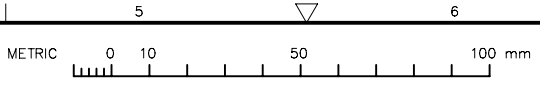
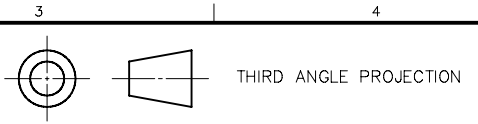
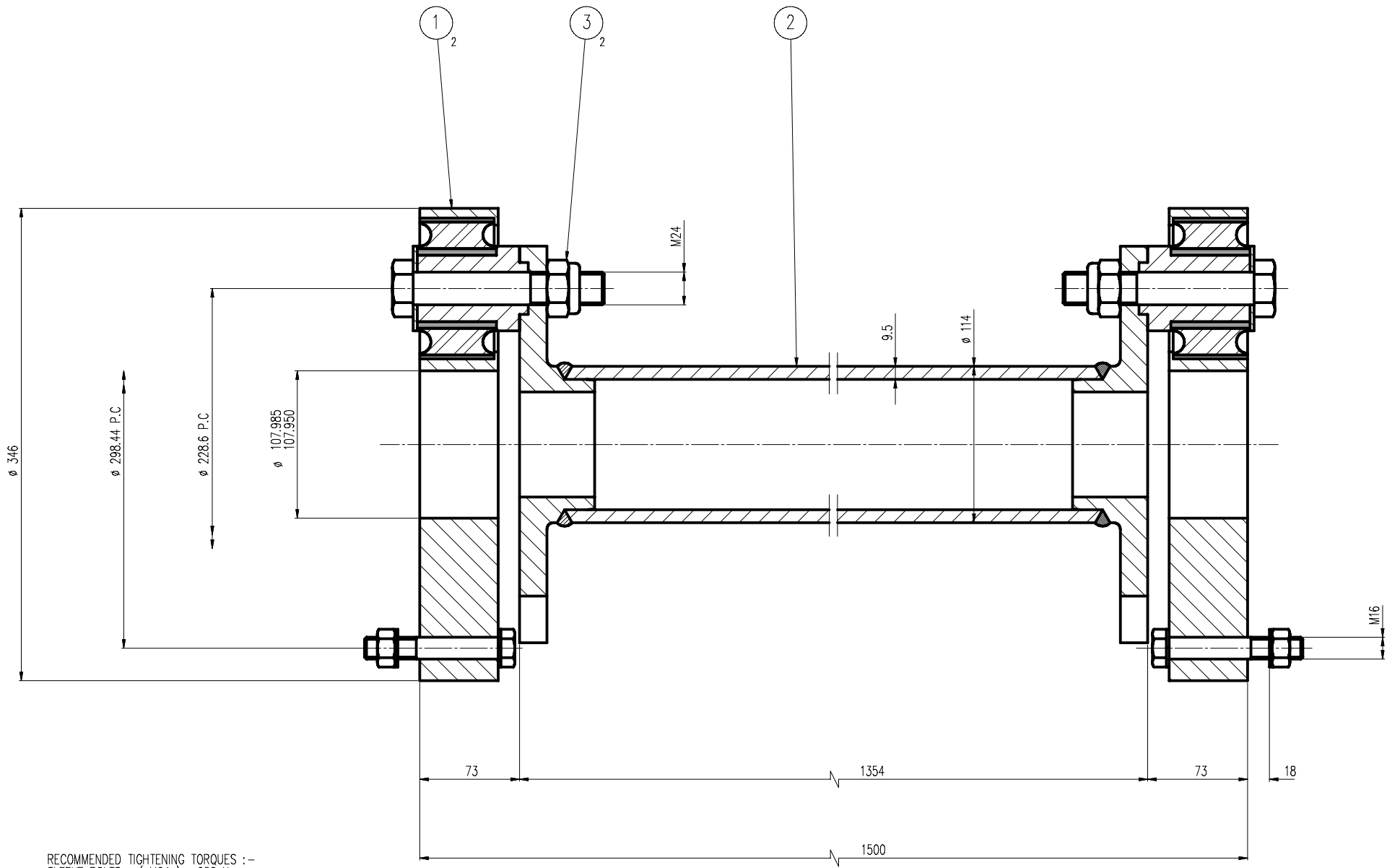


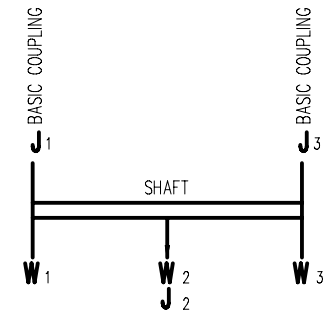
USED ON THIS DRAWING IS THE PROPERTY OF TWIFLEX LTD. IT MUST NOT BE LENT COPIED OR DISCLOSED WHOLLY OR IN PART TO ANY PERSON WITHOUT WRITTEN AUTHORITY FROM TWIFLEX LTD. DESIGN RIGHT SUBSISTS IN THE DESIGN OF ARTICLES MANUFACTURED WHOLLY OR IN PART IN ACCORDANCE WITH THIS DRAWING.



REMOVE SHARP EDGES DO NOT SCALE DIMENSIONS AND TOLERANCES TO BS 308



RECOMMENDED TIGHTENING TORQUES :-
 SLEEVE BOLTS (M24) : 650 Nm
 HOUSING BOLTS (M16) : 210 Nm



WEIGHT AND INERTIA			
	W kg	J	J kg m ²
W 1	18.1	J 1	0.64
W 2	58.6	J 2	0.37
W 3	18.1	J 3	0.64

ISSUE No.	ALT.No.	DATE	DESCRIPTION	GRID REF
01				
ALTERATION				



DIMENSIONS IN mm.
 OPEN TOLERANCES ± 0.25
 ANGLES ± 0.5°
 GENERAL M/C FINISH = 1.6 µm
 SURFACE FINISH IN MICRONS
 e.g. $\sqrt{2}$ = 2 MICRONS
 (= 0.002mm) CLA
 (= 80 MICRO-INCHES CLA)

CERT'D	
CHECKED	
DRAWN	B.C
DATE	11-3-92
SCALE	1 : 2

DESCRIPTION	
FIXED LENGTH SHAFT 120 - 6/6	
MATERIAL	FINISH

INERTIA	WEIGHT
1.65 kg m ²	94.8 kg
PART No.	LA11688
DRG. No.	A12138

THIS ISSUE 01